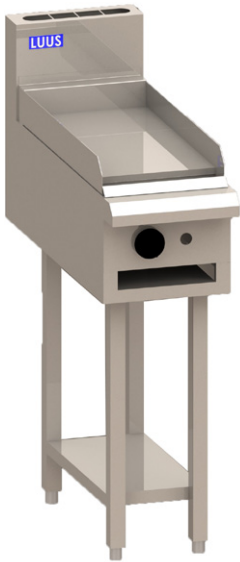
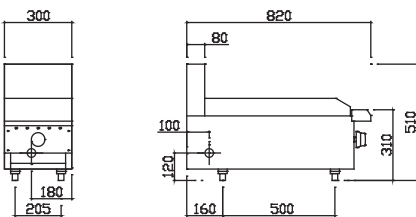
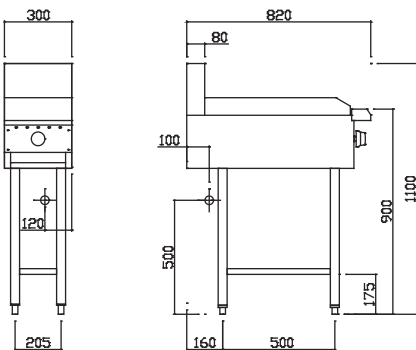


Technical Specifications for BCH-3P



ESSENTIALS SERIES

- 16mm thick mild steel griddle plate
- Hotplate and chargrill combinations
- Available freestanding or as a benchtop model
- Modular Essentials series design
- 15 month 'Platinum Warranty'
- Easy to clean and service



Key:
 Gas

Griddle/Hotplate

- 20 mj burners with pilot & FFD (manual ignition)
- Variable flame control valve with low flame setting
- 16mm thick mild steel griddle plate
- Top weld sealed hotplate sections
- BCH-3P plate: 285mm x 530mm; 0.15m² cooking area
- 1.5mm stainless steel splash guards
- Griddle oil bin 0.9mm stainless steel

Overall Construction

- Heavy duty construction
- Welded 1.2mm stainless steel front hob
- Front and side panels 0.9mm stainless steel
- Splashback 1.2 mm stainless steel
- 38mm stainless steel tube legs with adjustable feet

Dimensions

- 300mm x 820mm x 1100mm H
- 300mm x 820mm x 510mm H (benchtop)
- Working height 900mm
- Weight 45kg
- Packed dimensions 640mm x 860mm x 1260mm H
- Packed weight 62kg

Connections

- Gas 3/4" BSP female
- 120mm from right, 100mm from rear, 500mm from floor
- Benchtop model: 180mm from right, 120mm from bottom
- Supplied with gas regulator (specify Nat or LP on order)

Cleaning & Servicing

- Easy access to all parts & components from front

Options/Accessories

- Rear castors
- Joining caps
- RH and LH side shields
- Benchtop mount (specify when ordering)
- Extended warranty

Model	Description	Nat Gas	LP Gas
BCH-3P	300 grill	20 mj	20 mj

